



SLIMYONIK® AIR BODYSTYLER BY



Technology that makes you feel **truly beautiful**

Are you ready to discover the latest in WEIGHT LOSS AND METABOLIC science? By choosing THE Slimyonic® Air Bodystyler by Beauty Technology, thousands of WELLNESS CENTRE owners are enjoying 5 star reviews, achieving real results and earning loyal customers.

www.beautytechnology.com.au

CONTENTS

03

What is the Slimyonik® Air Bodystyler

04

How does the Slimyonik® Air Bodystyler suit work?
Our Lymphatic System

05

Slimyonik® | AIR function

07

What is the Slimyonik® Air Bodystyler used to treat?
How does cellulite form?

08

Why do I need the Slimyonik® Air Bodystyler for my business?

09

ROI
The Slimyonik® Silhouette Refiner

10

SLIMYONIK® | AIR Programmes

11

Technical Data

12

Get Started

What is the Slimyonik® Air Bodystyler

The Slimyonik® Air Bodystyler suit kick starts the metabolism through an individualised massage, enriching the body with oxygen to unlock a detoxifying and rapid regenerative effect. Slimyonik® feels like a relaxing massage while utilising cutting-edge technology and circulating oxygen to perform circumferential lymphatic drainage. This process burns up to 400 calories in 24 hours without the need for exercise. Requiring only a 30-40 minutes treatment window, the Slimyonik® Air Bodystyler suit is perfect for those with a busy lifestyle.



How does the Slimyonik® Air Bodystyler suit work?

The Slimyonik® Air Bodystyler suit is an individualised pressure massage treatment that uses science to its advantage. Created in Germany, the Slimyonik® Air Bodystyler suit works on the simple premise that oxygen is very good for our bodies, and the more we have of it, the better we feel and the better our metabolism will perform to effectively transform fat into water and what we exhale, carbon dioxide. Slimyonik® Air Bodystyler treatments are customised to each individual with pre-programmed settings for various concerns, body types and desired outcomes of treatment.

Our lymphatic system

In addition to the arteries and veins, the body uses an additional system for the transportation of fluid, the LYMPHATIC SYSTEM.

Unlike veins and arteries, the lymphatic system is not a self-contained system, but in all body tissue like the roots of a tree. A lymphatic vessel is an anatomical vessel and is similar to a blood vessel. However, it is not used to transport blood, but to drain away the fluid (lymph) found in the tissue.

The lymphatic system is also responsible for the return of lingering tissue fluid (i.e. fluid not reabsorbed by the blood vessel system) and protein molecules to the venous blood circulation.

It also has an immunobiological function. During fat digestion, a large proportion of the fats absorbed from food are packed into chylomicrons by the enterocytes in the small intestine and then transported into the blood by the lymph vessels.

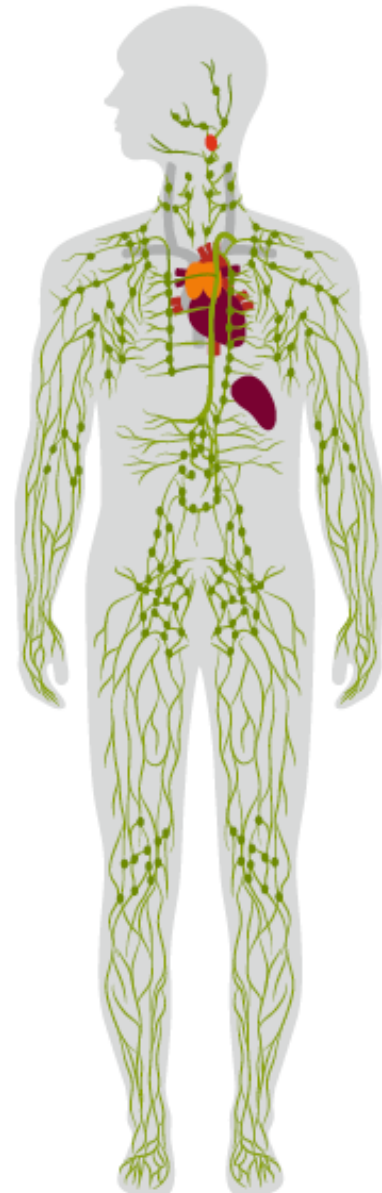
Congestion in the lymphatic system or excessive demands on the return transport capacity (e.g. venous congestion due to heart failure) result in the formation of lymphoedema.

Metabolic products that cannot be transported via the veins are removed via the lymphatic system, such as:

- Protein
- Fat
- Water

Background: lymph does not flow by itself.

'Lymph needs to be directed.'



SLIMYONIK® | AIR function

Scientific findings support SLIMYONIK® AIR Bodystyler 86% of fat is exhaled and 14% is excreted via body fluids.

For many people, the oxygen content in their body tissue is too low. This is typically due to our modern lifestyle: we spend too long sitting down, we do not exercise enough, and we breathe shallowly and superficially.

Oxygen can only be absorbed from the air we breathe, and the higher the oxygen content, the better the physical constitution, or well-being, of every one of us.

The SLIMYONIK-AIR-Bodystyler treatment is a turbocharge for the metabolism and subsequently also for burning fat

Based on this knowledge, we developed the new SLIMYONIK-AIR-Bodystyler. During the SLIMYONIK treatment PLUS inhalation, oxygen-enriched ambient air is inhaled and introduced into the body tissue. This stimulates the metabolism, similar to during exercise. The body needs more oxygen in order to metabolise fatty acids. This extra oxygen is introduced to the body through inhalation during the treatment. This works like a catalyst that stimulates the metabolism of fat and the removal of 'slags' due to the increased availability of oxygen. The oxygen cleans the 'slagged' connective tissue and activates the lymph. The oxygen provided by the treatment and immediately available to the body activates the burning of fat.

Oxygen production and supply during the Slimyonik Bodystyler treatment

The ambient air is sucked in by the unit, cleaned and germ-reduced, and enriched with oxygen by means of membrane technology. The oxygen content is increased from approx. 21% to approx. 30%, corresponding to a moderate increase of approx. 40%. We recommend that our customers consciously breathe deeply during the treatment in order to ensure optimal results.

Our body can acquire energy from carbohydrates, fats and proteins. If you want to lose weight, i.e. burn fat, it is important to consider the following in relation to breathing: carbohydrates are hydrates of carbon with the basic formula $C_6H_{12}O_6$. O_6 refers to six oxygen atoms. This means that carbohydrates include oxygen. Fats do not do this. They are purely hydrocarbons, without oxygen. It is therefore logical that when the body suffers from an oxygen deficiency due to intensive activity, it naturally falls back on nutrients that provide it with precious oxygen in this situation, namely carbohydrates. However, this also means that if you exert yourself too intensively, at too high a speed, at your maximum oxygen intake capacity and become short of breath, you are not burning fat, but rather carbohydrates, and will not lose weight. Fats burn in the muscles, but only in combination with oxygen.

If you want to lose weight, you not only need to reduce calorie intake, but also ensure that the body has sufficient supply of oxygen so that it can attack its fat reserves by burning them with oxygen.

* BMJ 2014; 349 doi: <https://doi.org/10.1136/bmj.g7257> Cite this as: BMJ 2014;349:g7257

How does cellulite form?

Hormonal changes

Weak connective tissue

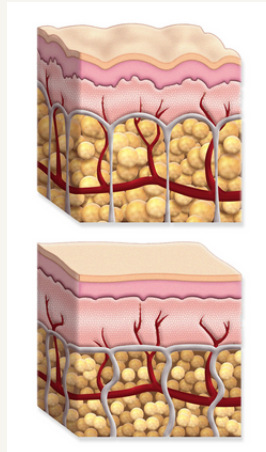
Unhealthy lifestyle

Too little exercise

Inadequate oxygen supply

Illnesses – medication

Environmental influences



There are various risk factors considered to be causes of cellulite, which favour the development of orange-peel skin. The process is always the same: fat cells move up through the connective tissue and form unsightly pockets on the legs, bum and stomach.

An unbalanced, unhealthy diet generally leads to an alkaline deficiency and excess weight. Alkaline deficiency leads to weak connective tissue, visible from pockets on the thighs, upper arms, stomach and hips. In general, an unhealthy lifestyle can be considered to be a risk factor for orange-peel skin. Excessive alcohol and tobacco consumption, lack of exercise increases the probability of these unwanted pockets forming on the skin. High levels of stress and insufficient sleep are also risk factors for cellulite.

The ageing process begins around the age of 25, from which time less and less collagen is produced. During the menopause, the collagen content in the skin drops rapidly by up to 30 per cent. However, collagen is the most commonly produced structural protein in the human body and is the basis for firm skin. The collagen fibres form a kind of three-dimensional network in the dermis (the middle layer of the three layers of the skin) and ensure that the skin can absorb moisture and can store other moisture-storing substances such as hyaluronic acid. Unfortunately, with increasing age, the skin cells become more lazy and comfortable, and hormones often go crazy. The decline in collagen in the body increases, moisture is stored less efficiently and the skin becomes more flabby in appearance.

These changes are usually noticed in the face first, and subsequently in the rest of the body.

We distinguish between covering, filling and structure.

The covering, or tissue, is more firm or flabby depending on one's predisposition. With advancing years, it becomes softer, and collagen content decreases. Significant fluctuations in weight as a result of frequent diets or pregnancies also overstretch the covering. In this case, we recommend the 30/70 alkaline-rich diet, detoxifying, exercising, regular Silhouette Refiner and SLIMYONIK applications. In the case of 'filling', there are too many plump fat cells. If they press through the gaps in the connective tissue structure, the skin looks bumpy in appearance. Losing weight is a good idea, but slowly, to ensure that the covering is not impacted. In this case, we recommend the 30/70 alkaline-rich diet (but not too much), detoxifying, exercising, regular Silhouette Refiner and SLIMYONIK applications. In the case of 'Structure', this relates to the longitudinal collagen bands in the connective tissue that provide support from the inside. If they do this in an excessively extreme way, the skin is pulled inwards in some places. We recommend a SLIMYONIK treatment here, as the connective tissue fibres need to be softened. With this type of complexion, please drink 2-3 litres of water per day.

Why do I need the Slimyonik® Air Bodystyler for my business?

- Safe. Pain-free and non-invasive
- Achieve medical grade results at accessible pricing for customers
- Widen your target market. Suitable for all ages and body types
- Offer customers individualised treatments that embrace their uniqueness, rejecting a one sized fits all approach
- Excellent return on investment
- Continued support. Ongoing clinical, technical and marketing assistance
- Easy to train staff, plethora of training resources provided
- The potential to upsell for product use during treatment and product purchase of the Slimyonik® Silhouette Refiner
- Fast turnaround time per treatment, just 30-40 minutes
- Little man power needed as the Slimyonik® Silhouette Refiner is machine operated
- Low service levels required on equipment
- Low running costs, only a pair of hygiene pants or hygiene jacket (depending which treatment) and a sterile soft nasal cannula need to be replaced between each session

ROI

Recommended treatment cost for your client is up to \$95 per session, ideally with a minimum of 2x sessions per week. Treatments are usually sold in packages of 10 or 15 treatments. Treatment cost includes energy costs, hygienic trousers/jacket and a soft nasal cannula including sterile filter, which provides an excellent return on investment.

The Slimyonik® Gels

In conjunction with the Slimyonik® Air Bodystyler suit and depending on your customer's goals, we recommend the use of the Slimyonik® Body Contour Gel (warming effect) or Silhouette Refiner Gel (cooling effect), which is a light gel that uses active ingredients to moisturise and contour.

The Slimyonik® Gels result in the following improvements:



REDUCES
FORMATION OF
NEW CELLS



ACTIVATES FAT
REDUCTION



ACCELERATES
THE BREAKDOWN
OF EXISTING FAT



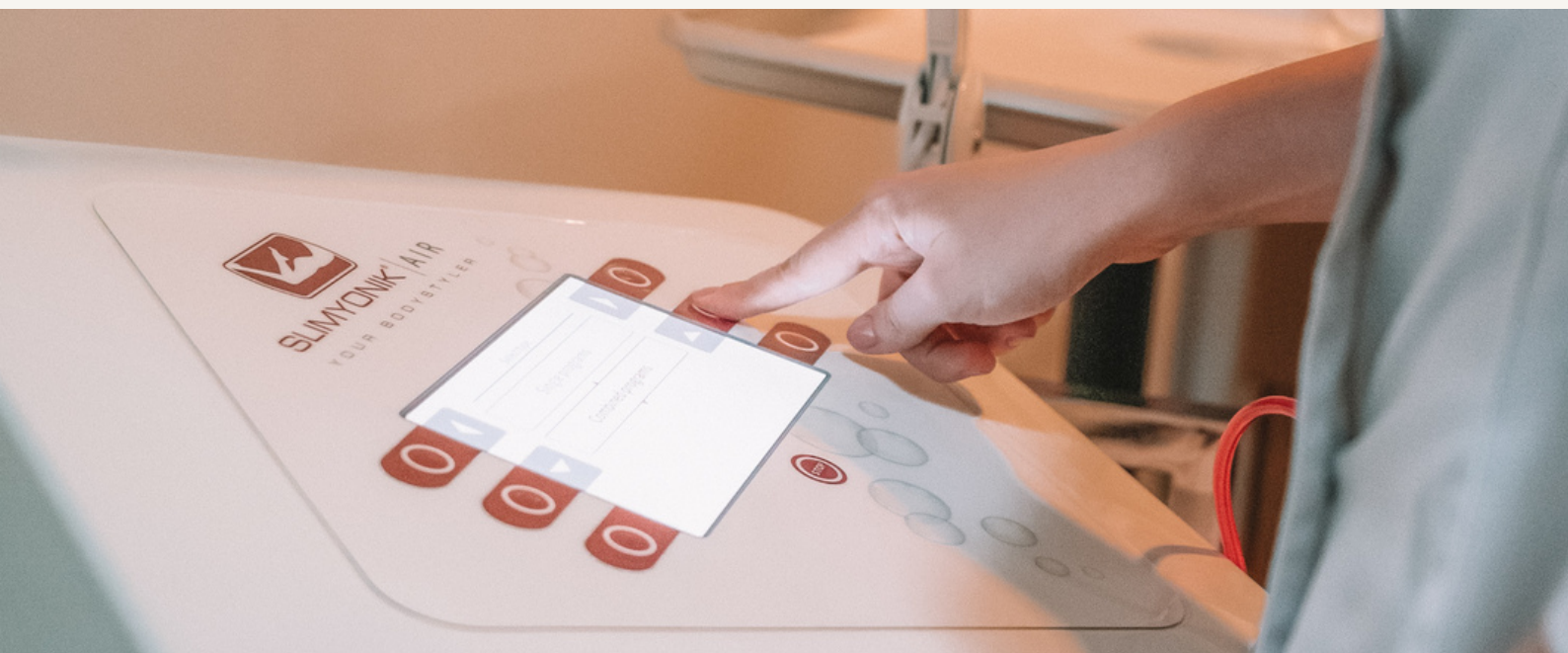
ENABLES
DRAINAGE



VISIBLE
IMPROVEMENT IN
'PROBLEM AREAS'



PRE & POST
PROCEDURE



SLIMYONIK® | AIR Programmes

Oxygen inhalation for multiple applications only with
SLIMYONIK® AIR Bodystyler



Single Programmes

Programme 1 | Slimming & cellulite massage

Tightening and strengthening of the connective tissue is the goal of this treatment. This programme supports fat reduction during a diet, including in problem areas. Treatment time with trousers approx. 34 min. +/- 10% | Treatment time with jacket approx. 23 min. +/- 10% (*)

Programme 2 | Cellulite massage

This programme stimulates lymph flow and increased blood circulation in the skin. Positive impact on silhouette. Treatment time with trousers approx. 33 min. +/- 10% | Treatment time with jacket approx. 21 min. +/- 10% (*)

Programme 3 | Relaxing massage

Pleasant relaxation, doing something good for the body, as with all other programmes, stimulating the metabolism. Treatment time with trousers approx. 47 min. +/- 10% | Treatment time with jacket approx. 34 min. +/- 10% (*)

Programme 4 | Lymphatic massage

Also supports the excretion of waste products. This is a great relief for heavy, swollen legs. Treatment time with trousers approx. 44 min. +/- 10% | Treatment time with jacket approx. 32 min. +/- 10% (*)

Combined programmes

Programme 1 | Pre & post / Lipolysis / Cryo / Cavitation

Please choose this programme 2 x before and several times after a lipolysis, cryo-treatment or a treatment involving low-frequency ultrasound. Treatment time with trousers approx. 34 min. +/- 10% | Treatment time with jacket approx. 22 min. +/- 10% (*)

Programme 2 | Sports massage

Immediately after sporting activity, this programme supports the breakdown of lactate and can prevent muscle cramps. No pre-programme
Treatment time with trousers approx. 43 min. +/- 10% | Treatment time with jacket approx. 29 min. +/- 10% (*)

Programme 3 | Post / HIIT / EMS / Vibro

Application directly after activity / no pre-programme
Treatment time with trousers approx. 20 min. +/- 10% | Not available with jacket

Programme 4 | Pre & post / Laser lipolysis / Radio frequency

Application 2 x before and several times after treatment with the above units. Very intensive treatment. Treatment time with trousers approx. 34 min. +/- 10% | Treatment time with jacket approx. 22 min. +/- 10% (*)

(*) The specified program length corresponds to the test time at a pressure setting of: 80 mbar = trousers closed | 50 mbar = jacket closed. The effective duration of treatment depends on the patient, the set pressure and the selected zip setting.

Technical Data

SLIMYONIK® AIR BODYSTYLER	
POWER SUPPLY	
Input voltage	230 V
Input frequency	50 Hz
Maximum power consumption	180 W
Fuse	2 A, T / 250 V
Tripping characteristic of the fuse	T (slow-blow), configuration: 5 × 20 mm
SAFETY	
Safety class	I
Degree of protection	IP20
MASSAGE PRESSURE RANGE	
Working pressure	2.67 kPa – 14.0 kPa
Minimum pressure	27 mbar
Maximum pressure	140 mbar
MISCELLANEOUS	
Dimensions	40 × 40 × 22 cm
Weight	9 kg



Sounds perfect for my business. How do I get started?

At Beauty Technology we've harnessed what is important to your customers. Go on, help your customers feel truly beautiful with a little science and technology.

To set up your consultation with one of our experts, get in touch via the [contact form](#) on our website or the details below.

+61 490 257 449
info@beautytechnology.com.au
beautytechnology.com.au

62 New South Head Rd
Edgecliff NSW 2027
Australia

